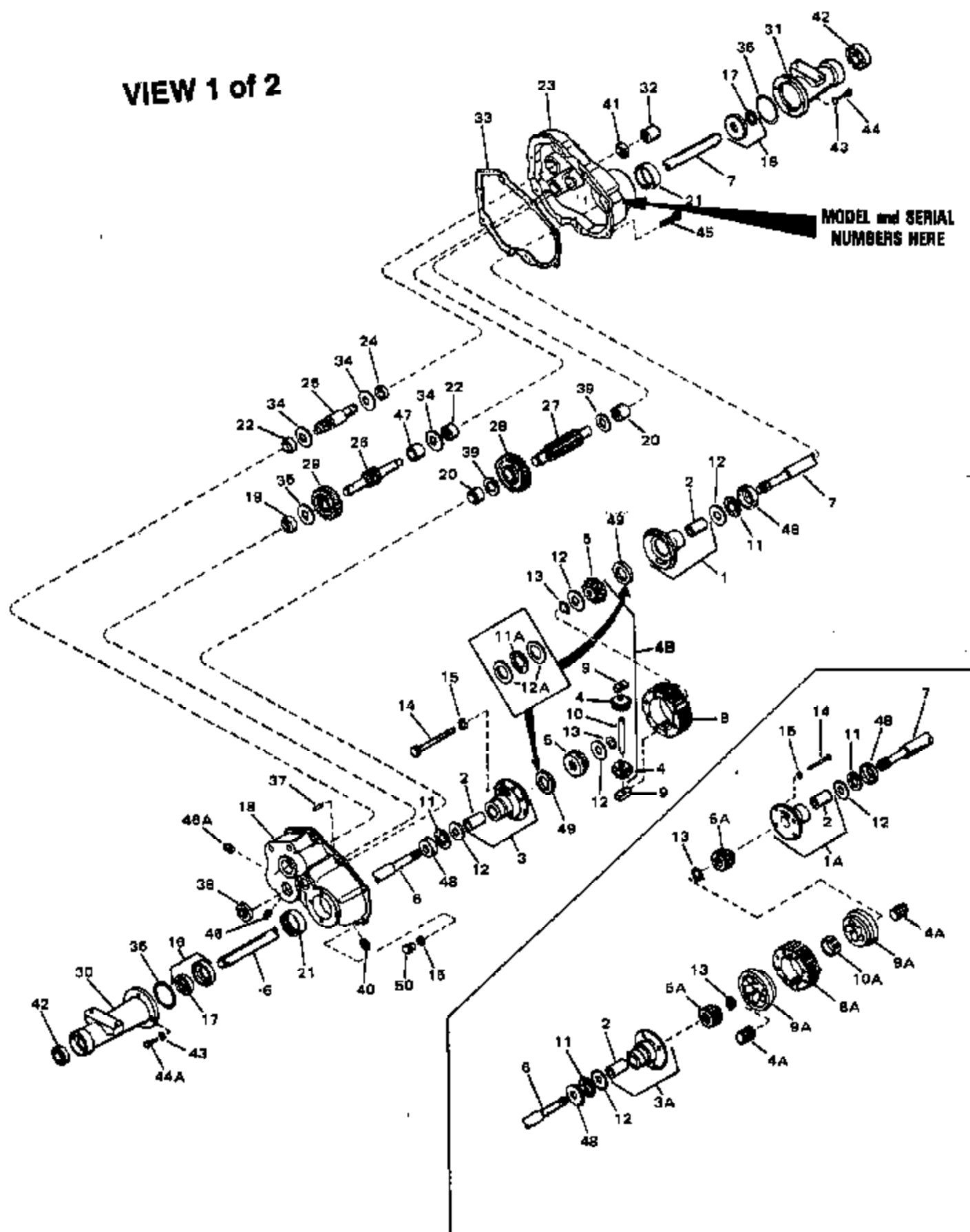


ILLUSTRATION SHOWS TYPICAL PARTS ONLY. ORDER BY PART NUMBER. PARTS NOT LISTED ARE SUPPLIED BY OEM.

VIEW 1 of 2



Ref #	Part Number	Qty	Description
1	774071A		Carrier Assy., Differential (Incl. 2)
2	780041		Bushing
3	774072A		Carrier Assy., Differential (Incl. 2)
4B	778147		Gear Kit (Incl. Nos. 4 & 5)
4	778094		Pinion, Bevel
5	778095		Gear, Bevel
6	774083		Axle (12-1/16" long)
7	774083		Axle (12-1/16" long)
8	778033A		Gear, Ring
9	786027		Block, Drive
10	786019		Pin, Drive NOTE: This spring is now obsolete and is no longer required as a replacement part.
11A	780039	2400-2404-A Peerless #1	Page 2 of 3 Bearing, Thrust NOTE: Single washer No. 780107 can be used interchangeably in place of 2 No. 780042 washers and 1 No. 780039 thrust bearing in this location only.
11	780039		Bearing, Thrust
12	780042		Washer, Thrust
12A	780042		Washer, Thrust NOTE: Single washer No. 780107 can be used interchangeably in place of 2 No. 780042 washers and 1 No. 780039 thrust bearing in this location only.
13	792018		Ring, Snap
14	792005		Screw, 1/4-20 x 2-1/2"
15	792006		Lockwasher, 1/4"
16	788021		Seal & Retainer Assy., Oil (Incl. 17)
17	788008		Seal, Oil
18	772059		Cover Assy. (Incl. 19 thru 22)
19	780046		Bearing, Needle
20	780047		Bearing, Needle (capped)
21	780048		Bearing, Needle
22	780049		Bearing, Needle (capped)
23	770053		Case Assy. (Incl. 20, 21 & 22)
24	780047		Bearing, Needle (capped)
26	776064		Shaft & Gear, Brake
27	776065		Pinion, Output
28	778036		Gear, Output
30	782024		Housing, Axle (5-25/32" long) NOTE: Axle housing assemblies for Model 2408 and 2410 are supplied by Jacobsen Manufacturing Company.
31	782024		Housing, Axle (5-25/32" long) NOTE: Axle housing assemblies for Model 2408 and 2410 are supplied by Jacobsen Manufacturing Company.
33	788023		Gasket, Case & Cover
34	780042		Washer, Thrust
35	780007		Washer, Thrust
36	788024		Seal, Square cut
37	786026		Pin, Dowel
38	788008		Seal, Oil
39	780052		Washer, Thrust
40	792019		Plug, Magnetic drain
42	780050		Bearing, Ball
44A	792037		Screw, 5/16-18 x 1"
44	792037		Screw, 5/16-18 x 1"
45	792007		Screw, 1/4-20 x 3/4"

Ref #	Part Number	Qty	Description
46A	792010		Plug, Pipe (3/8 sq. hd.)
46	792010		Plug, Pipe (3/8 sq. hd.)
47	786039		Spacer
48	780075		Race, Thrust
49	780107		Washer